

USER MANUAL

LENCORE'S ZONE CONTROLLER APPLICATION

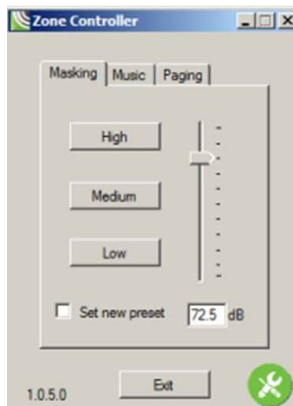
Welcome to Lencore's Zone Controller Application! The Zone Controller App allows an administrator to quickly and easily adjust the sound masking, paging or audio volumes for the zone(s) they have the authority to control. This app allows the user to set and adjust the volume to High, Medium or Low.

ZONE CONTROLLER APP INSTALLATION:

Zone Controller installation and setup will be handled by your system administrator.
*Please contact your administrator for further assistance.

USING THE ZONE CONTROLLER APP:

Now, in the Zone Controller App, there are independent tabs for: Masking, Music and Paging. If volume control is enabled, lettering will be black; if volume control is NOT enabled for the function then the tab will be "grayed" out.



Click on "High" within any of the enabled tabs. NOTE: Each volume setting is set independently from the other tabs and will need to be completed for each volume set.

Upon clicking "High" a slider bar and decibel (dB) number block will appear. Slide the slider bar to the desired volume.

Check the "Set new preset" box.
Click on "High," again.
Repeat these steps for "Medium" and "Low."
The Zone Controller settings are now set and the application is ready for use.

Simply select the function tab that you want to adjust (Masking, Music or Paging) and click on "High", "Medium", or "Low." The preset volume controls will be applied and the volume will adjust.